

# GASARC™

AN ESAB® BRAND

## TECH MASTER GPM4000 SERIES

### 4.5 Purity Two Stage Brass Barstock Diaphragm BS EN ISO 7291 Manual Change Gas Control Panel

The Tech Master GPM4000 series two stage manual change control panels are designed for primary pressure gas control of non-corrosive or toxic, technical gases up to grade 4.5 purity (99.995%), on gas distribution systems where constant delivery pressure is required.

- **GPM4021 Series** | Two Stage Single Cylinder Diaphragm Manual Gas Change Control Panel, FKM Seal, FKM Pressure Relief Valve
- **GPM4022 Series** | Two Stage Single Cylinder Diaphragm Manual Gas Change Control Panel, EPDM Seal, EPDM Pressure Relief Valve
- **GPM4041 Series** | Two Stage Twin Cylinder Diaphragm Manual Gas Change Control Panel, FKM Seal, FKM Pressure Relief Valve
- **GPM4042 Series** | Two Stage Twin Cylinder Diaphragm Manual Gas Change Control Panel, EPDM Seal, EPDM Pressure Relief Valve



### ★ FEATURES

- High pressure isolation valves
- Two stage pressure regulation
- Process line isolation valve
- Encapsulated seat design
- Single and twin cylinder configuration

### 📄 MATERIALS

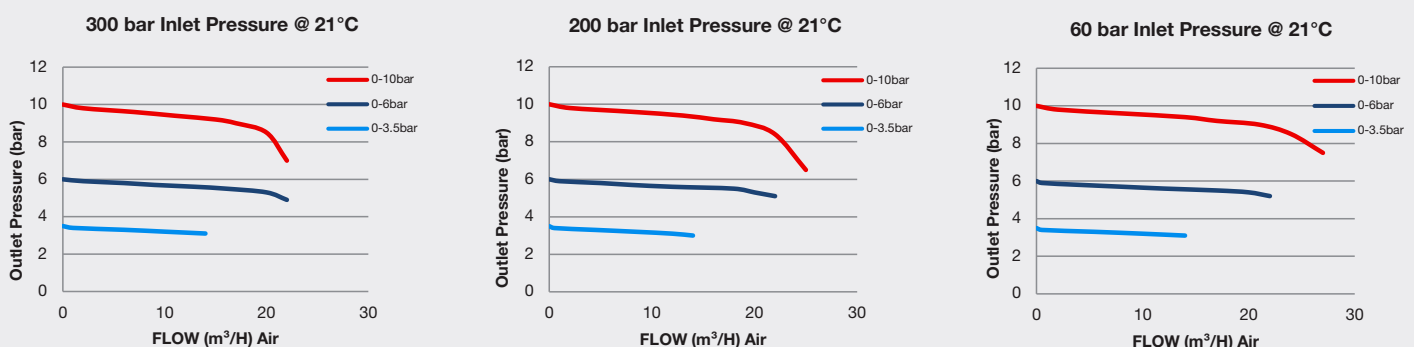
|           |                                  |
|-----------|----------------------------------|
| Body      | Brass Barstock                   |
| Bonnet    | High Strength Alloy              |
| Diaphragm | Polychloroprene (Neoprene®) (CR) |
| Seat      | Polyamide (Nylon®)               |
| Filter    | 10 Micron 316L Stainless Steel   |

### 👍 SPECIFICATION

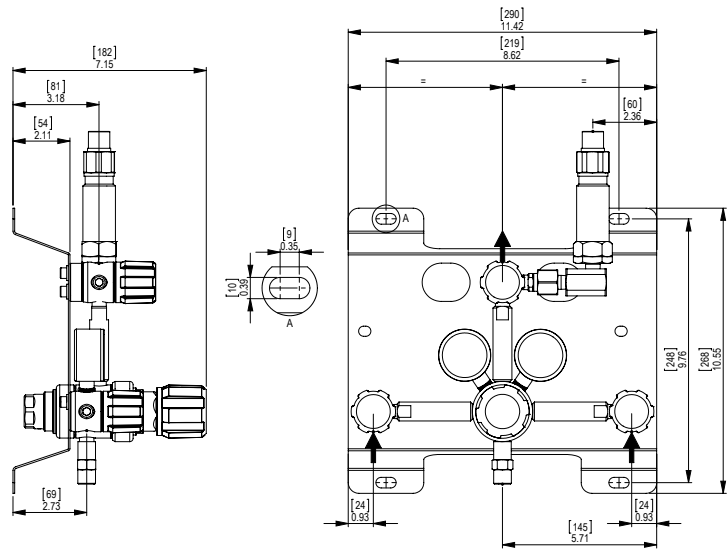
|                         |  |
|-------------------------|--|
| Maximum Inlet Pressure  | 60 bar (870 PSI) / 300 bar (4350 PSI)*               |
| Delivery Pressure Range | 3.5 bar (50 PSI) / 6 bar (90 PSI) / 10 bar (150 PSI) |
| Gauge                   | 50mm (2") Diameter                                   |
| Ports                   | ¼" NPT Female  |
| Temperature Range       | -20° C to +60° C (-4° F to +140° F)                  |
| Flow Coefficient (Cv)   | 0.078  |
| Weight                  | 5.00kg (11.02 lbs)****                               |

\* Subject to cylinder connection \*\*\*\* Subject to final configuration.

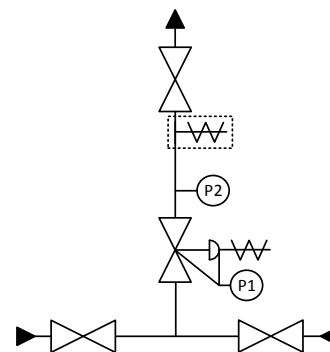
### ✓ FLOW PERFORMANCE



# DIMENSIONS



# PROCESS & INSTRUMENTATION



- Isolation Valve
- Adjustable Pressure Regulator with P1 Pressure Gauge and Pressure Relief Valve
- P2 Pressure Gauge
- Pressure Relief Valve
- Denotes a Configurable Option

## Model No. Selector Guide

| Product Type | Inlet Pressure        | Outlet Pressure           | Inlet Pressure Gauge     | Outlet Pressure Gauge | Inlet Connection                    | Outlet Connection                  | Options  |
|--------------|-----------------------|---------------------------|--------------------------|-----------------------|-------------------------------------|------------------------------------|--|
| GPM4021      | 02 60 bar / 870 PSI   | 03 -1 - 3.5 bar / 50 PSIG | 00 No Gauge Fitted       | 00 No Gauge Fitted    | 000 No Inlet Fitted                 | 00 No Outlet Fitted                | A No Options Selected                              |
| GPM4022      | 04 300 bar / 4350 PSI | 04 -1 - 6 bar / 90 PSIG   | 01 bar/PSI               | 01 bar/PSI            | 001 1/8 Stainless Steel Compression | 01 1/8 Stainless Steel Compression | K Certificate of Conformity                        |
| GPM4041      |                       | 05 -1 - 10 bar / 150 PSIG | 02 bar/PSI Contact Gauge |                       | 002 1/4 Stainless Steel Compression | 02 1/4 Stainless Steel Compression | M CO2 Burst Disc                                   |
| GPM4042      |                       |                           |                          |                       | 003 6mm Stainless Steel Compression | 03 6mm Stainless Steel Compression | P Calibration / Pressure Test Certificate          |
|              |                       |                           |                          |                       | 004 1/4 NPT Male                    | 04 1/4 NPT Male                    | R Fitted Pipeline Pressure Relief Valve, FKM Seal  |
|              |                       |                           |                          |                       | 007 G3/8 BSP R/H Brass Male         | 06 G1/2 BSP R/H Brass Male         | S Fitted Pipeline Pressure Relief Valve, EPDM Seal |
|              |                       |                           |                          |                       | 008 G3/8 BSP L/H Brass Male         | 07 G3/8 BSP R/H Brass Male         | T Fitted High Pressure Purge Facility, FKM Seal    |
|              |                       |                           |                          |                       |                                     | 08 G3/8 BSP L/H Brass Male         | U Fitted High Pressure Purge Facility, EPDM Seal   |
|              |                       |                           |                          |                       |                                     |                                    | X Special Instruction                              |