

GASARC™

AN ESAB® BRAND

TECH MASTER GPM4000 SERIES

4.5 Purity Single Stage Brass Barstock Diaphragm BS EN ISO 7291 Manual Change Gas Control Panel

The Tech Master GPM4000 series single stage manual change control panels are designed for primary pressure gas control of non-corrosive or toxic, technical gases up to grade 4.5 purity (99.995%), on gas distribution systems where slight pressure variation is acceptable.

- **GPM4011 Series** | Single Stage Single Cylinder Diaphragm Manual Gas Change Control Panel, FKM Seal, FKM Pressure Relief Valve
- **GPM4012 Series** | Single Stage Single Cylinder Diaphragm Manual Gas Change Control Panel, EPDM Seal, EPDM Pressure Relief Valve
- **GPM4031 Series** | Single Stage Twin Cylinder Diaphragm Manual Gas Change Control Panel, FKM Seal, FKM Pressure Relief Valve
- **GPM4032 Series** | Single Stage Twin Cylinder Diaphragm Manual Gas Change Control Panel, EPDM Seal, EPDM Pressure Relief Valve



★ FEATURES

- High pressure isolation valves
- Two stage pressure regulation
- Process line isolation valve
- Encapsulated seat design
- Single and twin cylinder configuration

📄 MATERIALS

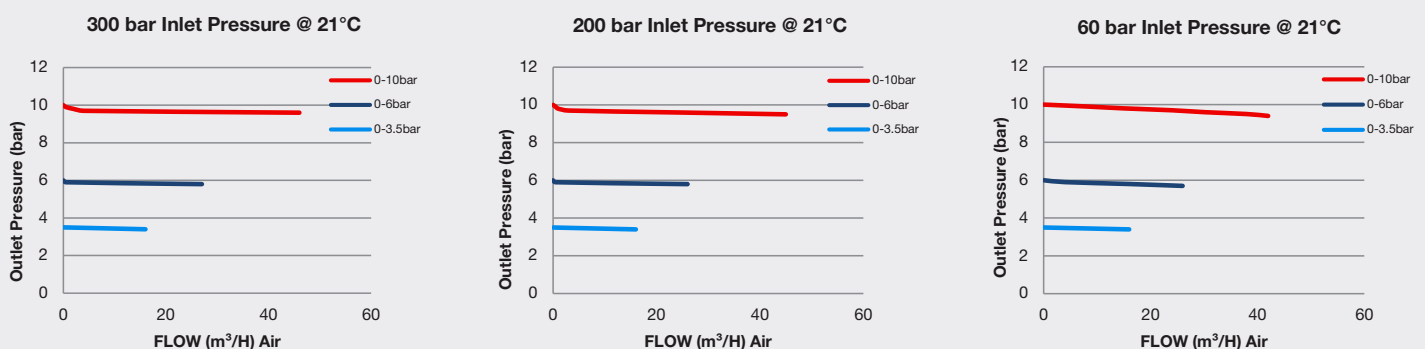
Body	Brass Barstock
Bonnet	High Strength Alloy
Diaphragm	Polychloroprene (Neoprene®) (CR)
Seat	Polyamide (Nylon®)
Filter	10 Micron 316L Stainless Steel

👍 SPECIFICATION

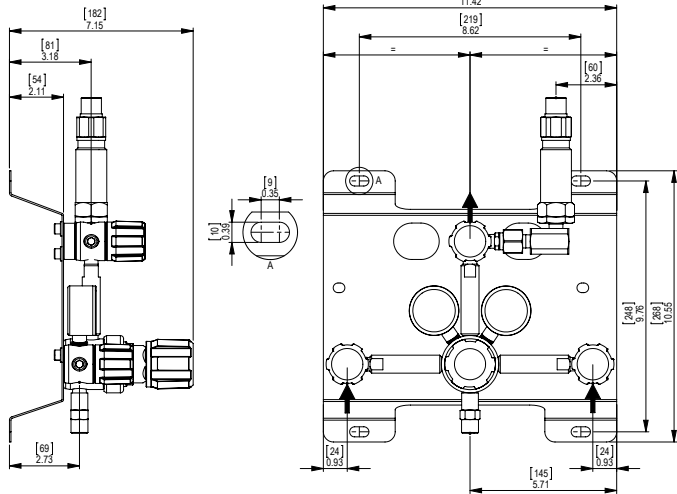
Maximum Inlet Pressure	60 bar (870 PSI) / 300 bar (4350 PSI)*
Delivery Pressure Range	3.5 bar (50 PSI) / 6 bar (90 PSI) / 10 bar (150 PSI)
Gauge	50mm (2") Diameter
Ports	1/4" NPT Female
Temperature Range	-20° C to +60° C (-4° F to +140° F)
Flow Coefficient (Cv)	0.1
Weight	5.00kg (11.02 lbs)****

* Subject to cylinder connection. **** Subject to final configuration.

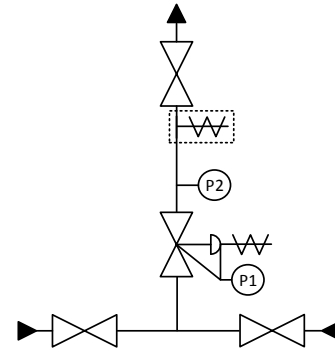
✓ FLOW PERFORMANCE



DIMENSIONS



PROCESS & INSTRUMENTATION



- Isolation Valve
- Adjustable Pressure Regulator with P1 Pressure Gauge and Pressure Relief Valve
- P2 Pressure Gauge
- Pressure Relief Valve
- Denotes a Configurable Option

Model No. Selector Guide

Product Type	Inlet Pressure	Outlet Pressure	Inlet Pressure Gauge	Outlet Pressure Gauge	Inlet Connection	Outlet Connection	Options
GPM4011	02 60 bar / 870 PSI	03 -1 - 3.5 bar / 50 PSIG	00 No Gauge Fitted	00 No Gauge Fitted	000 No Inlet Fitted	00 No Outlet Fitted	A No Options Selected
GPM4012	04 300 bar / 4350 PSI	04 -1 - 6 bar / 90 PSIG	01 bar/PSI	01 bar/PSI	001 1/8 Stainless Steel Compression	01 1/8 Stainless Steel Compression	K Certificate of Conformity
GPM4031		05 -1 - 10 bar / 150 PSIG	02 bar/PSI Contact Gauge		002 1/4 Stainless Steel Compression	02 1/4 Stainless Steel Compression	M CO2 Burst Disc
GPM4032					003 6mm Stainless Steel Compression	03 6mm Stainless Steel Compression	P Calibration / Pressure Test Certificate
					004 1/4 NPT Male	04 1/4 NPT Male	R Fitted Pipeline Pressure Relief Valve, FKM Seal
					007 G3/8 BSP R/H Brass Male	06 G1/2 BSP R/H Brass Male	S Fitted Pipeline Pressure Relief Valve, EPDM Seal
					008 G3/8 BSP L/H Brass Male	07 G3/8 BSP R/H Brass Male	T Fitted High Pressure Purge Facility, FKM Seal
						08 G3/8 BSP L/H Brass Male	U Fitted High Pressure Purge Facility, EPDM Seal
							X Special Instruction