

TECH MASTER GPD4200 SERIES

4.5 Purity Single Stage Brass Barstock Piston Differential Autochange Gas Control Panel

The Tech Master GPD4200 series single stage differential autochange control panels are designed for primary pressure gas control of non-corrosive or toxic, technical gases up to grade 4.5 purity (99.995%), on gas distribution systems where slight pressure variation is acceptable.

- **GPD4231 Series** | Single Stage Twin Cylinder Piston Differential Autochange Gas Control Panel, FKM Seal
- **GPD4232 Series** | Single Stage Twin Cylinder Piston Differential Autochange Gas Control Panel, EPDM Seal



★ FEATURES

- High pressure isolation valves
- Single stage pressure regulation
- Process line isolation valve
- Encapsulated seat design
- Twin cylinder configuration

📄 MATERIALS

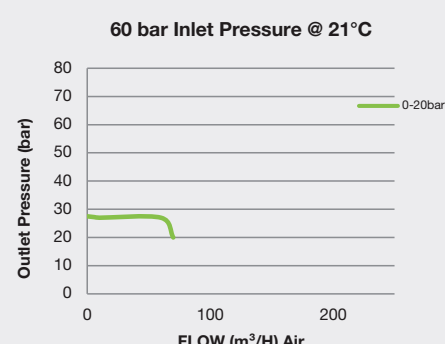
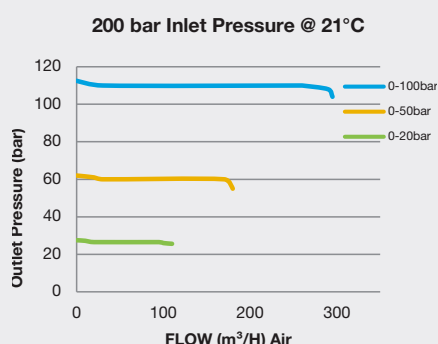
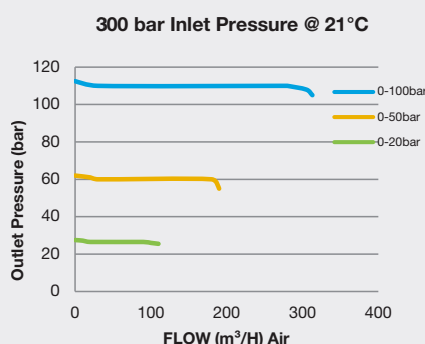
Body	Brass Barstock
Bonnet	Brass Barstock
Piston	Brass
Seal	FKM / EPDM
Seat	Polyamide (Nylon®)
Filter	10 Micron 316L Stainless Steel

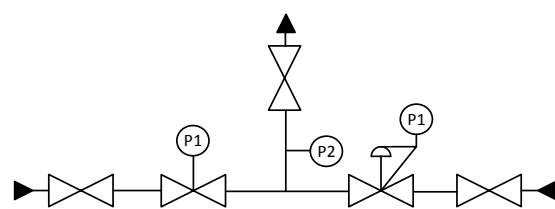
* Subject to cylinder connection. **** Subject to final configuration.




👍 SPECIFICATION

Maximum Inlet Pressure	60 bar (870 PSI) / 300 bar (4350 PSI)*
Delivery Pressure Range	20 bar (300 PSI) Minimum / 50 bar (725 PSI) Minimum / 100 bar (1450 PSI) Minimum
Gauge	50mm (2") Diameter
Ports	1/4" NPT Female
Temperature Range	-20° C to +60° C (-4° F to +140° F)
Flow Coefficient (Cv)	0.1
Weight	8.00kg (17.64 lbs)****

✓ FLOW PERFORMANCE





-  - Isolation Valve
  - Fixed Pressure Regulator with P1 Pressure Gauge
  - Adjustable Pressure Regulator with P1 Pressure Gauge and P2 Pressure Gauge