

GASARC™

AN ESAB® BRAND

TECH MASTER GPD4000 SERIES

4.5 Purity Single Stage Brass Barstock Diaphragm BS EN ISO 7291 Differential Autochange Gas Control Panel

The Tech Master GPD4000 series single stage differential autochange control panels are designed for primary pressure gas control of non-corrosive or toxic, technical gases up to grade 4.5 purity (99.995%), on gas distribution systems where slight pressure variation is acceptable.

- **GPD4031 Series** | Single Stage Twin Cylinder Diaphragm Differential Autochange Gas Control Panel, FKM Seal, FKM Pressure Relief Valve
- **GPD4032 Series** | Single Stage Twin Cylinder Diaphragm Differential Autochange Gas Control Panel, EPDM Seal, EPDM Pressure Relief Valve



★ FEATURES

- High pressure isolation valves
- Single stage pressure regulation
- Process line isolation valve
- Encapsulated seat design
- Twin cylinder configuration

📄 MATERIALS

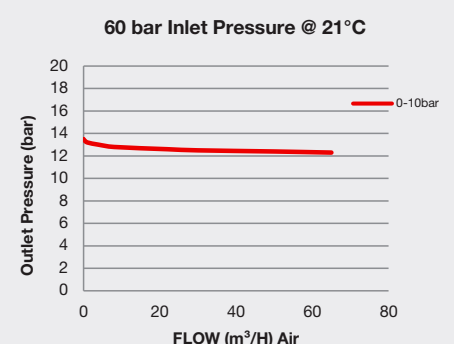
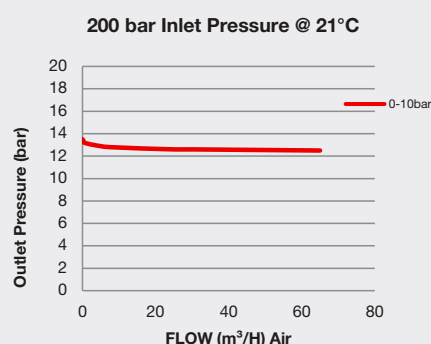
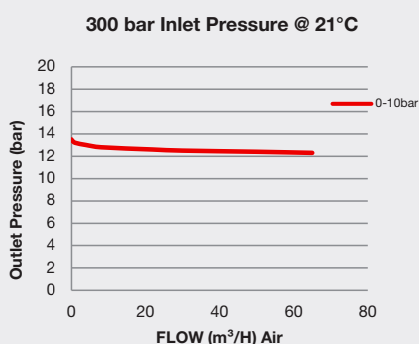
Body	Brass Barstock
Bonnet	High Strength Alloy
Diaphragm	316L Stainless Steel
Seat	Polyamide (Nylon®)
Filter	10 Micron 316L Stainless Steel

👍 SPECIFICATION

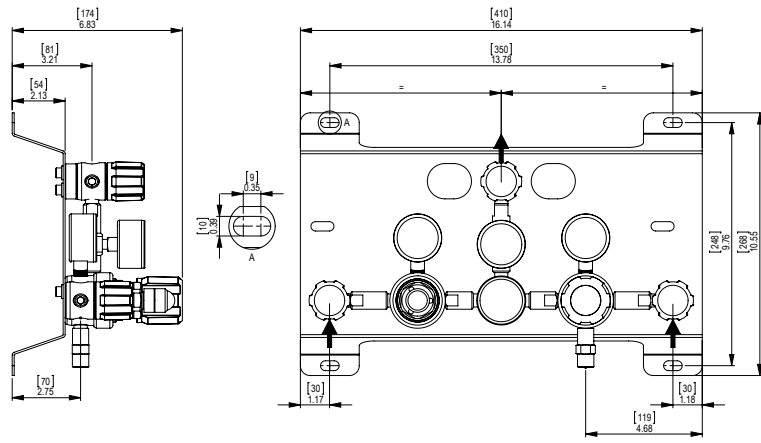
Maximum Inlet Pressure	60 bar (870 PSI) / 300 bar (4350 PSI)*
Delivery Pressure Range	10 bar (150 PSI) Minimum
Gauge	50mm (2") Diameter
Ports	¼" NPT Female
Temperature Range	-20° C to +60° C (-4° F to +140° F)
Flow Coefficient (Cv)	0.1
Weight	8.00kg (17.64 lbs)****

* Subject to cylinder connection. **** Subject to final configuration.

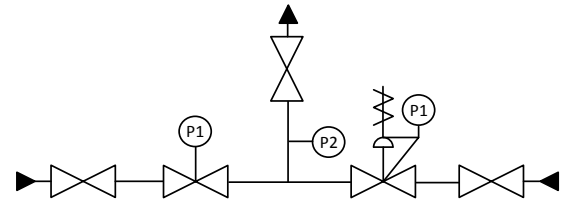
✓ FLOW PERFORMANCE



DIMENSIONS



PROCESS & INSTRUMENTATION



- Isolation Valve
- Fixed Pressure Regulator with P1 Pressure Gauge
- Adjustable Pressure Regulator with P1 Pressure Gauge and Pressure Relief Valve
- P2 Pressure Gauge

Model No. Selector Guide

Product Type	Inlet Pressure	Outlet Pressure	Inlet Pressure Gauge	Outlet Pressure Gauge	Inlet Connection	Outlet Connection	Options
GPD4031	02 60 bar / 870 PSI	05 10 bar / 150 PSIG min	00 No Gauge Fitted	00 No Gauge Fitted	000 No Inlet Fitted	00 No Outlet Fitted	A No Options Selected
GPD4032	04 300 bar / 4350 PSI		01 bar/PSI	01 bar/PSI	001 1/8 Stainless Steel Compression	01 1/8 Stainless Steel Compression	K Certificate of Conformity
			02 bar/PSI Contact Gauge		002 1/4 Stainless Steel Compression	02 1/4 Stainless Steel Compression	M CO2 Burst Disc
					003 6mm Stainless Steel Compression	03 6mm Stainless Steel Compression	P Calibration / Pressure Test Certificate
					004 1/4 NPT Male	04 1/4 NPT Male	T Fitted High Pressure Purge Facility, FKM Seal
					007 G3/8 BSP R/H Brass Male	06 G1/2 BSP R/H Brass Male	U Fitted High Pressure Purge Facility, EPDM Seal
					008 G3/8 BSP L/H Brass Male	07 G3/8 BSP R/H Brass Male	R Fitted Pipeline Pressure Relief Valve, FKM Seal
						08 G3/8 BSP L/H Brass Male	S Fitted Pipeline Pressure Relief Valve, EPDM Seal
							X Special Instruction