

SPEC MASTER HPL620 SERIES

6.0 Purity Single Stage Nickel Plated Brass Barstock High Pressure Piston Line Regulators

Spec Master HPL620 series single stage piston line regulators are designed for secondary pressure gas control of non-corrosive or toxic, high purity gases up to grade 6.0 purity (99.9999%), on gas distribution systems.

- **HPL621 Series** | Single Stage Piston Line Regulator, FKM Seal
- **HPL622 Series** | Single Stage Piston Line Regulator, EDPM Seal



FEATURES

- Four port configuration
- Front and rear panel mounting capabilities
- Encapsulated seat design
- Low wetted surface area
- Full range of inlet and outlet fittings
- Base and side entry



MATERIALS

Body	Nickel Plated Brass Barstock
Bonnet	Nickel Plated Brass Barstock
Piston	Brass
Seal	FKM / EPDM
Seat	PCTFE
Filter	10 Micron 316L Stainless Steel



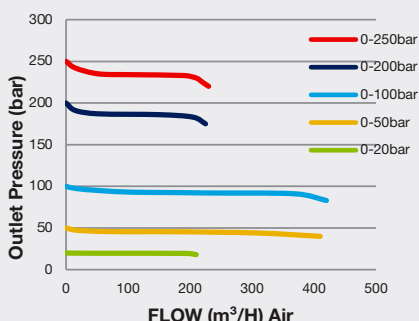
SPECIFICATION

Maximum Inlet Pressure	300 bar (4350 PSI)
Delivery Pressure Range	20 bar (300 PSI) / 50 bar (725 PSI) / 100 bar (1450 PSI) / 200 bar (2900 PSI) / 250 bar (3630 PSI)
Gauges	50mm (2") Diameter
Ports	1/4" NPT Female
Temperature Range	-20° C to +60° C (-4° F to +140° F)
Flow Coefficient (Cv)	0.1
Helium leak Integrity	1 x 10 ⁻⁹ mbar l/s
Weight	1.4 kg (3.1 lb)

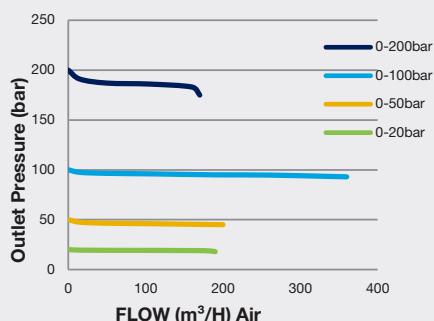


FLOW PERFORMANCE

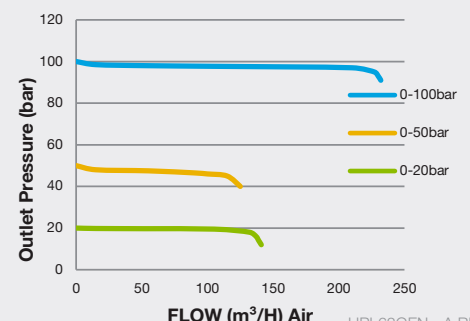
300 bar Inlet Pressure @ 21° C



200 bar Inlet Pressure @ 21° C

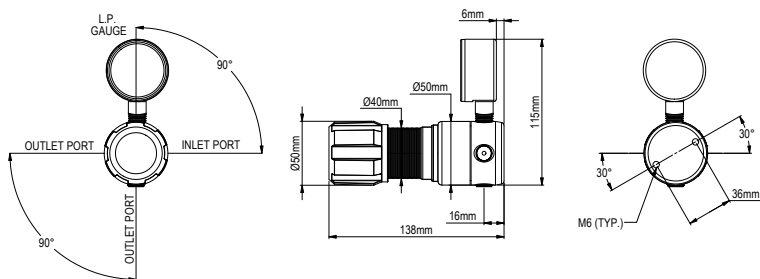


100 bar Inlet Pressure @ 21° C

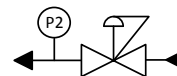




DIMENSIONS



PROCESS & INSTRUMENTATION



- Adjustable Pressure Regulator



- P2 Pressure Gauge

Model No. Selector Guide

Product Type	Inlet Pressure	Outlet Pressure	Inlet Pressure Gauge	Outlet Pressure Gauge	Inlet Connection	Outlet Connection	Options
HPL621	04 300 bar / 4350 PSI	07 -1 - 20 bar / 300 PSI	00 No Gauge Fitted	00 No Gauge Fitted	000 No Inlet Fitted	00 No Outlet Fitted	A No Options Selected
HPL622		10 -1 - 50 bar / 725 PSI		01 bar/PSI	001 1/8 Stainless Steel Compression	01 1/8 Stainless Steel Compression	F Bonnet Vent Capture Kit
		11 0 - 100 bar / 1450 PSI		10 Plugged Port	002 1/4 Stainless Steel Compression	02 1/4 Stainless Steel Compression	G Helium Test Certificate
		12 0 - 200 bar / 2900 PSI			003 6mm Stainless Steel Compression	03 6mm Stainless Steel Compression	K Certificate of Conformity
		13 0 - 250 bar / 3630 PSI			004 1/4 NPT Male	04 1/4 NPT Male	L Panel Mount Locking Nut Kit
					007 G3/8 BSP R/H Brass Male	07 G3/8 BSP R/H Brass Male	P Calibration/ Pressure Test Certificate
					008 G3/8 BSP L/H Brass Male	08 G3/8 BSP L/H Brass Male	X Special Instruction
						09 Isolation Valve, 1/4 NPT Female, FKM Seal	
						10 Isolation Valve, 1/4 NPT Female, EPDM Seal	
						11 Isolation Valve, 1/8 Stainless Steel Compression, FKM Seal	
						12 Isolation Valve, 1/8 Stainless Steel Compression, EPDM Seal	
						13 Isolation Valve, 1/4 Stainless Steel Compression, FKM Seal	
						14 Isolation Valve, 1/4 Stainless Steel Compression, EPDM Seal	
						15 Isolation Valve, 6mm Stainless Steel Compression, FKM Seal	
						16 Isolation Valve, 6mm Stainless Steel Compression, EPDM Seal	
						17 Isolation Valve, 1/4 NPT Male, FKM Seal	
						18 Isolation Valve, 1/4 NPT Male, EPDM Seal	
						19 Isolation Valve, G3/8 BSP R/H Brass Male, FKM Seal	
						20 Isolation Valve, G3/8 BSP R/H Brass Male, EPDM Seal	
						21 Isolation Valve, G3/8 BSP L/H Brass Male, FKM Seal	
						22 Isolation Valve, G3/8 BSP L/H Brass Male, EPDM Seal	