

GASARC™

AN ESAB® BRAND

SPEC MASTER HPX6200 SERIES

6.0 Purity Two Stage Nickel Plated Brass Barstock Piston Switch Change Gas Control Panel

The Spec Master HPX6200 series two stage switch change control panels are designed for primary pressure gas control of non-corrosive or toxic, high purity gases up to grade 6.0 purity (99.9999%), on gas distribution systems where constant delivery pressure is required.

- **HPX6241 Series** | Two Stage Twin Cylinder Piston Switch Change Gas Control Panel, FKM Seal
- **HPX6242 Series** | Two Stage Twin Cylinder Piston Switch Change Gas Control Panel, EPDM Seal



★ FEATURES

- Compact design
- Two stage pressure regulation
- Encapsulated seat design
- Twin cylinder configuration

✎ MATERIALS

Body	Nickel Plated Brass Barstock
Bonnet	Nickel Plated Brass Barstock
Piston	Brass
Seal	FKM / EPDM
Seat	PCTFE
Filter	10 Micron 316L Stainless Steel

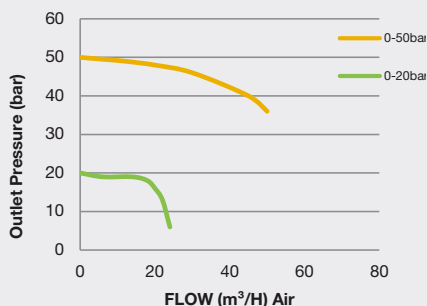
👍 SPECIFICATION

Maximum Inlet Pressure	60 bar (870 PSI) / 300 bar (4350 PSI)*
Delivery Pressure Range	20 bar (300 PSI) / 50 bar (725 PSI)
Gauge	50mm (2") Diameter
Ports	1/4" NPT Female
Temperature Range	-20° C to +60° C (-4° F to +140° F)
Flow Coefficient (Cv)	0.078
Helium Leak Integrity	1x10 ⁻⁹ mbar l/s
Weight	3.5kg (7.72 lbs)****

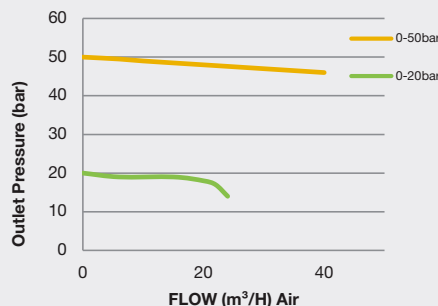
* Subject to cylinder connection. **** Subject to final configuration.

✓ FLOW PERFORMANCE

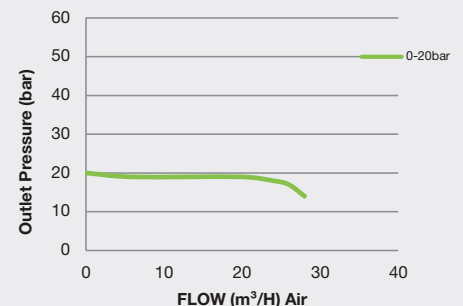
300 bar Inlet Pressure @ 21°C



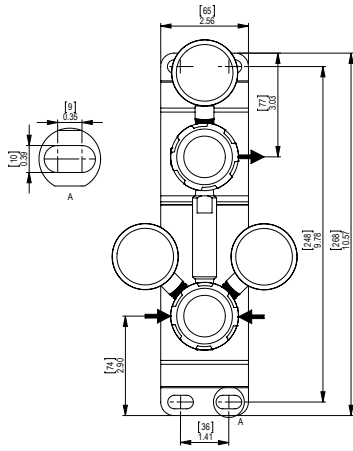
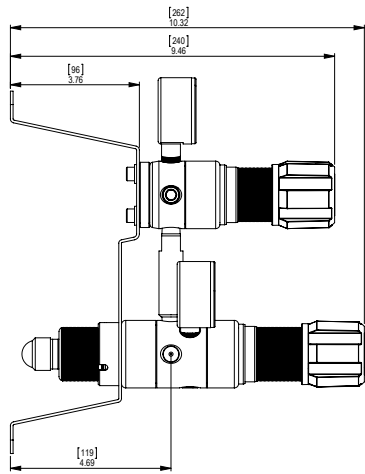
200 bar Inlet Pressure @ 21°C



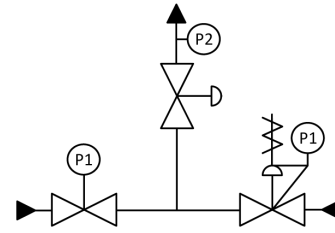
60 bar Inlet Pressure @ 21°C






DIMENSIONS



PROCESS & INSTRUMENTATION



-  - Fixed Pressure Regulator with P1 Pressure Gauge
-  - Adjustable Pressure Regulator with P1 Pressure Gauge
-  - Adjustable Pressure Regulator with Pressure Relief Valve

Model No. Selector Guide

Product Type	Inlet Pressure	Outlet Pressure	Inlet Pressure Gauge	Outlet Pressure Gauge	Inlet Connection	Outlet Connection	Options				
HPX6241	02 60 bar / 870 PSI	07 -1 - 20 bar / 300 PSIG	00 No Gauge Fitted	00 No Gauge Fitted	000 No Inlet Fitted	00 No Outlet Fitted	A No Options Selected				
HPX6242	04 300 bar / 4350 PSI	10 -1 - 50 bar / 725 PSIG	01 bar/PSI	01 bar/PSI	001 1/8 Stainless Steel Compression	01 1/8 Stainless Steel Compression	F Bonnet Vent Capture Kit				
					002 1/4 Stainless Steel Compression	02 1/4 Stainless Steel Compression	G Helium Test Certificate				
					003 6mm Stainless Steel Compression	03 6mm Stainless Steel Compression	K Certificate of Conformity				
					004 1/4 NPT Male	04 1/4 NPT Male	P Calibration / Pressure Test Certificate				
					007 G3/8 BSP R/H Brass Male	07 G3/8 BSP R/H Brass Male	X Special Instruction				
					008 G3/8 BSP L/H Brass Male	08 G3/8 BSP L/H Brass Male					