

GASARC™

AN ESAB® BRAND

SPEC MASTER HPD6200 SERIES

6.0 Purity Single Stage Nickel Plated Brass Barstock Piston Differential Autochange Gas Control Panel

The Spec Master HPD6200 series single stage differential autochange control panels are designed for primary pressure gas control of non-corrosive or toxic, high purity gases up to grade 6.0 purity (99.9999%), on gas distribution systems where slight pressure variation is acceptable.

- **HPD6231 Series** | Single Stage Twin Cylinder Piston Differential Autochange Gas Control Panel, FKM Seal
- **HPD6232 Series** | Single Stage Twin Cylinder Piston Differential Autochange Gas Control Panel, EPDM Seal



★ FEATURES

- High pressure isolation valves
- High pressure purge facility
- Single stage pressure regulation
- Process line isolation valve
- Encapsulated seat design
- Twin cylinder configuration

📄 MATERIALS

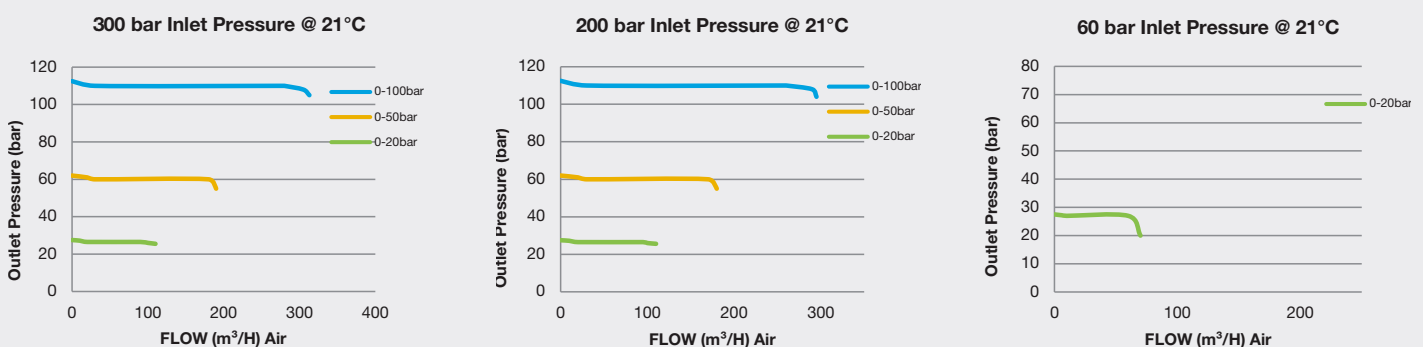
Body	Nickel Plated Brass Barstock
Bonnet	Nickel Plated Brass Barstock
Piston	Brass
Seal	FKM / EPDM
Seat	PCTFE
Filter	10 Micron 316L Stainless Steel

* Subject to cylinder connection. **** Subject to final configuration.

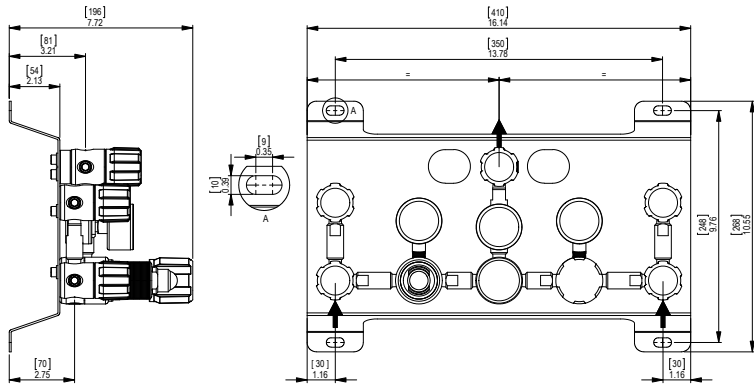
👍 SPECIFICATION

Maximum Inlet Pressure	60 bar (870 PSI) / 300 bar (4350 PSI)*
Delivery Pressure Range	20 bar (300 PSI) Minimum / 50 bar (725 PSI) Minimum / 100 bar (1450 PSI) Minimum
Gauge	50mm (2") Diameter
Ports	¼" NPT Female
Temperature Range	-20° C to +60° C (-4° F to +140° F)
Flow Coefficient (Cv)	0.1
Helium Leak Integrity	1x10 ⁻⁹ mbar l/s
Weight	8.00kg (17.64 lbs)****

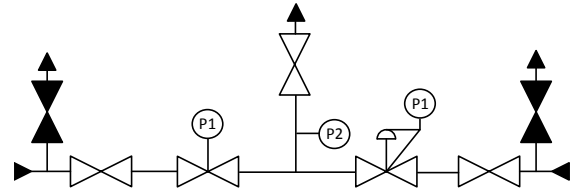
✓ FLOW PERFORMANCE



DIMENSIONS



PROCESS & INSTRUMENTATION



- Isolation Valve
- Isolation Valve (Closed)
- Fixed Pressure Regulator with P1 Pressure Gauge
- Adjustable Pressure Regulator with P1 Pressure Gauge
- P2 Pressure Gauge

Model No. Selector Guide

Product Type	Inlet Pressure	Outlet Pressure	Inlet Pressure Gauge	Outlet Pressure Gauge	Inlet Connection	Outlet Connection	Options
HPD6231	02 60 bar / 870 PSI	07 20 bar / 300 PSIG Min	00 No Gauge Fitted	00 No Gauge Fitted	000 No Inlet Fitted	00 No Outlet Fitted	A No Options Selected
HPD6232	04 300 bar / 4350 PSI	10 50 bar / 725 PSIG Min	01 bar/PSI	01 bar/PSI	001 1/8 Stainless Steel Compression	01 1/8 Stainless Steel Compression	F Bonnet Vent Capture Kit
					002 1/4 Stainless Steel Compression	02 1/4 Stainless Steel Compression	G Helium Test Certificate
		11 100 bar / 1450 PSI Min	02 bar/PSI Contact Gauge	003 6mm Stainless Steel Compression	03 6mm Stainless Steel Compression	K Certificate of Conformity	
				004 1/4 NPT Male	04 1/4 NPT Male	M CO2 Burst Disc	
		007 G3/8 BSP R/H Brass Male	07 G3/8 BSP R/H Brass Male	P Calibration / Pressure Test Certificate			
		008 G3/8 BSP L/H Brass Male	08 G3/8 BSP L/H Brass Male	R Fitted Pipeline Pressure Relief Valve, FKM Seal			
				S Fitted Pipeline Pressure Relief Valve, EPDM Seal			
				X Special Instruction			