

GASARC™

AN ESAB® BRAND



LAB MASTER LGP500 SERIES

5.0 Purity Single Stage Nickel Plated Brass Barstock Diaphragm Outlet Point Regulator

Lab Master LGP500 series single stage diaphragm outlet point regulators are designed for secondary pressure gas control of non-corrosive or toxic, high purity gases up to grade 5.0 purity (99.999%), on gas distribution systems.

- **LGP500 Series** | Single Stage Diaphragm Outlet Point Regulator



FEATURES

- Three port configuration
- Rear point mounting (1/4" NPT male)
- Encapsulated seat design
- Low wetted surface area
- Full range of outlet fittings
- Rear entry



MATERIALS

Body	Nickel Plated Brass Barstock
Bonnet	High Strength Alloy
Diaphragm	316L Stainless Steel
Seal	PTFE
Seat	Polyamide (Nylon®)
Filter	10 Micron 316L Stainless Steel



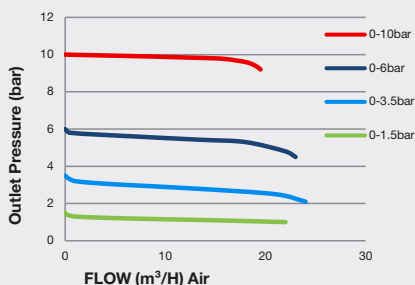
SPECIFICATION

Maximum Inlet Pressure	60 bar (870 PSI)
Delivery Pressure Range	1.5 bar (22 PSI) / 3.5 bar (50 PSI) / 6 bar (90 PSI) / 10 bar (150 PSI)
Gauges	50mm (2") Diameter
Ports	1/4" NPT Female
Temperature Range	-20° C to +60° C (-4° F to +140° F)
Flow Coefficient (Cv)	0.1
Weight	1.2 kg (2.7 lb)

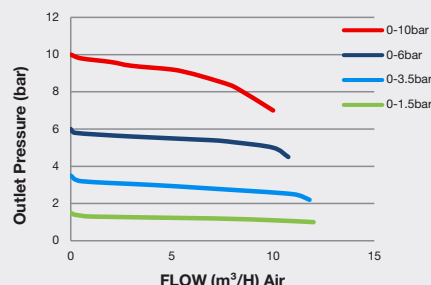


FLOW PERFORMANCE

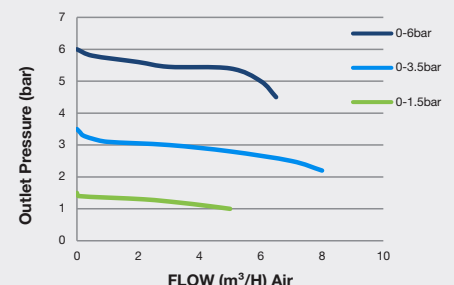
20 bar Inlet Pressure @ 21° C



10 bar Inlet Pressure @ 21° C

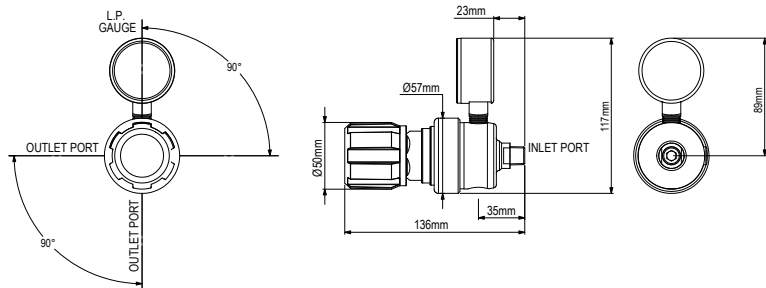


6 bar Inlet Pressure @ 21° C

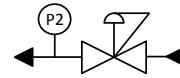




DIMENSIONS



PROCESS & INSTRUMENTATION



- Adjustable Pressure Regulator



- P2 Pressure Gauge

Model No. Selector Guide

Product Type	Inlet Pressure	Outlet Pressure	Inlet Pressure Gauge	Outlet Pressure Gauge	Inlet Connection	Outlet Connection	Options
LGP500	02 60 bar / 870 PSI	02 -1 - 1.5 bar / 22 PSIG	00 No Gauge Fitted	00 No Gauge Fitted	004 1/4 NPT Male	00 No Outlet Fitted	A No Options Selected
		03 -1 - 3.5 bar / 50 PSIG		01 bar/PSI		01 1/8 Stainless Steel Compression	K Certificate of Conformity
		04 -1 - 6 bar / 90 PSIG		10 Plugged Port		02 1/4 Stainless Steel Compression	P Calibration / Pressure Test Certificate
		05 -1 - 10 bar / 150 PSIG		03 6mm Stainless Steel Compression		03 6mm Stainless Steel Compression	X Special Instruction
		04 1/4 NPT Male		04 1/4 NPT Male			
		06 G1/2 BSP R/H Brass Male		06 G1/2 BSP R/H Brass Male			
		07 G3/8 BSP R/H Brass Male		07 G3/8 BSP R/H Brass Male			
		08 G3/8 BSP L/H Brass Male		08 G3/8 BSP L/H Brass Male			
		09 Isolation Valve, 1/4 NPT Female, FKM Seal		09 Isolation Valve, 1/4 NPT Female, FKM Seal			
		10 Isolation Valve, 1/4 NPT Female, EPDM Seal		10 Isolation Valve, 1/4 NPT Female, EPDM Seal			
		11 Isolation Valve, 1/8 Stainless Steel Compression, FKM Seal		11 Isolation Valve, 1/8 Stainless Steel Compression, FKM Seal			
		12 Isolation Valve, 1/8 Stainless Steel Compression, EPDM Seal		12 Isolation Valve, 1/8 Stainless Steel Compression, EPDM Seal			
		13 Isolation Valve, 1/4 Stainless Steel Compression, FKM Seal		13 Isolation Valve, 1/4 Stainless Steel Compression, FKM Seal			
		14 Isolation Valve, 1/4 Stainless Steel Compression, EPDM Seal		14 Isolation Valve, 1/4 Stainless Steel Compression, EPDM Seal			
		15 Isolation Valve, 6mm Stainless Steel Compression, FKM Seal		15 Isolation Valve, 6mm Stainless Steel Compression, FKM Seal			
		16 Isolation Valve, 6mm Stainless Steel Compression, EPDM Seal		16 Isolation Valve, 6mm Stainless Steel Compression, EPDM Seal			
		17 Isolation Valve, 1/4 NPT Male, FKM Seal		17 Isolation Valve, 1/4 NPT Male, FKM Seal			
		18 Isolation Valve, 1/4 NPT Male, EPDM seal		18 Isolation Valve, 1/4 NPT Male, EPDM seal			
		19 Isolation Valve, G3/8 BSP R/H Brass Male, FKM Seal		19 Isolation Valve, G3/8 BSP R/H Brass Male, FKM Seal			
		20 Isolation Valve, G3/8 BSP R/H Brass Male, EPDM Seal		20 Isolation Valve, G3/8 BSP R/H Brass Male, EPDM Seal			
		21 Isolation Valve, G3/8 BSP L/H Brass Male, FKM Seal		21 Isolation Valve, G3/8 BSP L/H Brass Male, FKM Seal			
		22 Isolation Valve, G3/8 BSP L/H Brass Male, EPDM Seal		22 Isolation Valve, G3/8 BSP L/H Brass Male, EPDM Seal			