

LAB MASTER LGD5000 SERIES

5.0 Purity Two Stage Nickel Plated Brass Barstock Diaphragm Differential Autochange Gas Control Panel

The Lab Master LGD5000 series two stage differential autochange control panels are designed for primary pressure gas control of non-corrosive or toxic, high purity gases up to grade 5.0 purity (99.999%), on gas distribution systems where constant delivery pressure is required.

- **LGD5041 Series** | Two Stage Twin Cylinder Diaphragm Differential Autochange Gas Control Panel, FKM Seal, FKM Pressure Relief Valve
- **LGD5042 Series** | Two Stage Twin Cylinder Diaphragm Differential Autochange Gas Control Panel, EPDM Seal, EPDM Pressure Relief Valve



★ FEATURES

- High pressure isolation valves
- High pressure purge facility
- Two stage pressure regulation
- Process line isolation valve
- Encapsulated seat design
- Twin cylinder configuration

✎ MATERIALS

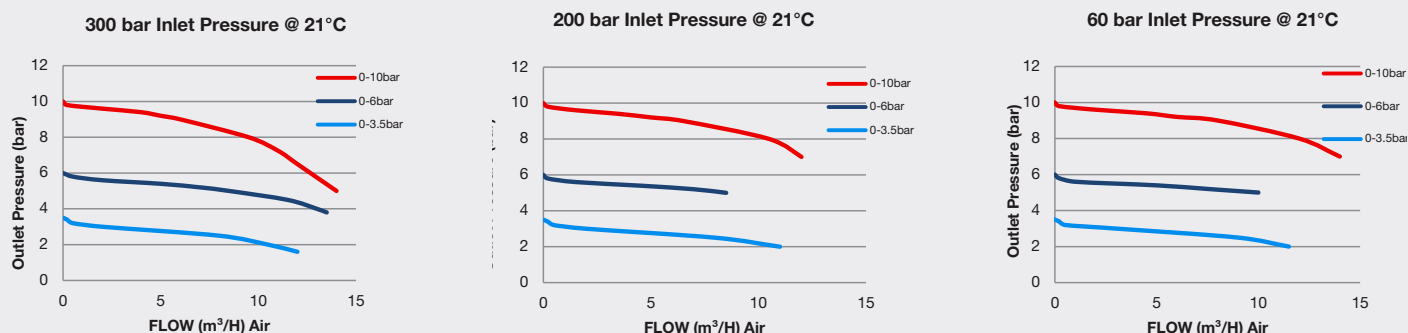
Body	Nickel Plated Brass Barstock
Bonnet	High Strength Alloy
Diaphragm	316L Stainless Steel
Seal	PTFE
Seat	Polyamide (Nylon®)
Filter	10 Micron 316L Stainless Steel

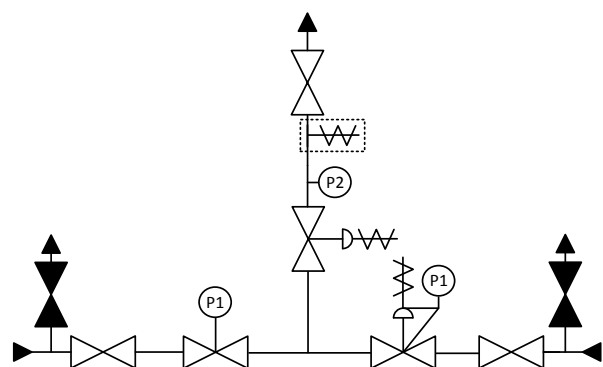
* Subject to cylinder connection. **** Subject to final configuration.









👍 SPECIFICATION

Maximum Inlet Pressure	60 bar (870 PSI) / 300 bar (4350 PSI)*
Delivery Pressure Range	3.5 bar (50 PSI) / 6 bar (90 PSI) / 10 bar (150 PSI)
Gauge	50mm (2") Diameter
Ports	1/4" NPT Female
Temperature Range	-20° C to +60° C (-4° F to +140° F)
Flow Coefficient (Cv)	0.078
Weight	8.00kg (17.64 lbs)****

✓ FLOW PERFORMANCE





- | | | | |
|-----------------------------------------------------------------------------------|----------------------------------------------------------------------------------|-------------------------------------------------------------------------------------|------------------------------------------------------------|
|  | - Isolation Valve |  | - Adjustable Pressure Regulator with Pressure Relief Valve |
|  | - Isolation Valve (Closed) |  | - P2 Pressure Gauge |
|  | - Fixed Pressure Regulator with P1 Pressure Gauge |  | - Pressure Relief Valve |
|  | - Adjustable Pressure Regulator with P1 Pressure Gauge and Pressure Relief Valve |  | - Denotes a Configurable Option |