

GASARC™

AN ESAB® BRAND



LAB MASTER LGS510 SERIES

5.0 Purity Single Stage Nickel Plated Brass Barstock Diaphragm Cylinder Regulator - Acetylene

Lab Master LGS510 series single stage diaphragm cylinder regulators are designed for primary pressure gas control of high purity Acetylene gas up to grade 5.0 purity (99.999%), on applications where slight pressure variation from decreasing cylinder pressure is acceptable.

- **LGS510 Series** | Single Stage Diaphragm Cylinder Regulator, EPDM Pressure Relief Valve - Acetylene

★ FEATURES

- Six port configuration
- Rear panel mounting capabilities
- Encapsulated seat design
- Low wetted surface area
- Full range of inlet and outlet fittings
- Side entry

📄 MATERIALS

Body	Nickel Plated Brass Barstock
Bonnet	High Strength Alloy
Diaphragm	316L Stainless Steel
Seal	PTFE
Seat	Polyamide (Nylon®)
Filter	10 Micron 316L Stainless Steel

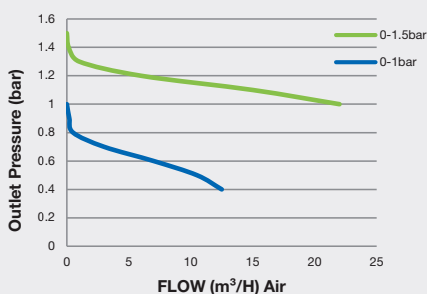
** Cylinder connection not included

👍 SPECIFICATION

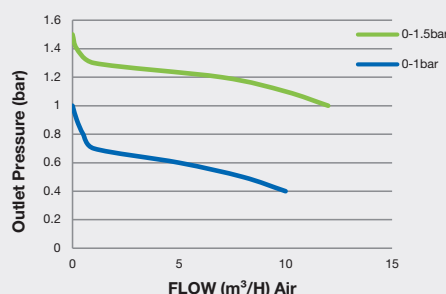
Maximum Inlet Pressure	25 bar (360 PSI)
Delivery Pressure Range	0-1 bar (15 PSI) / 1.5 bar (22 PSI)
Gauges	50mm (2") Diameter
Ports	1/4" NPT Female
Temperature Range	-20° C to +60° C (-4° F to +140° F)
Flow Coefficient (Cv)	0.1
Weight	1.2 kg (2.7 lb)**

✓ FLOW PERFORMANCE

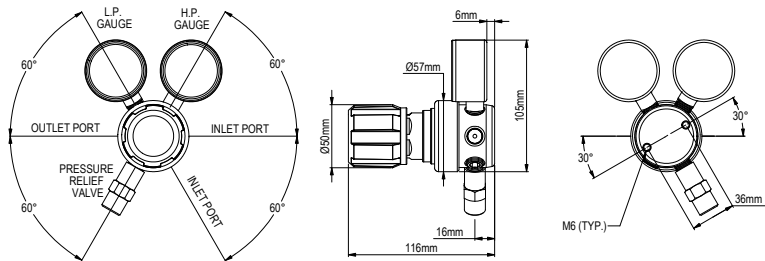
20 bar Inlet Pressure @ 21° C



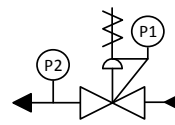
10 bar Inlet Pressure @ 21° C




DIMENSIONS



PROCESS & INSTRUMENTATION



-  - Adjustable Pressure Regulator with P1 Pressure Gauge
-  - P2 Pressure Gauge
-  - Pressure Relief Valve

Model No. Selector Guide

Product Type	Inlet Pressure	Outlet Pressure	Inlet Pressure Gauge	Outlet Pressure Gauge	Inlet/Cylinder Connection	Outlet Connection	Options	
LGS510	01 25 bar / 360 PSI	01 -1 - 1 bar / 15 PSI	00 No Gauge Fitted	00 No Gauge Fitted	000 No Gauge Fitted	00 No Inlet Fitted	A No Options Selected	
		02 -1 - 1.5 bar / 22 PSIG	01 bar/PSI	01 bar/PSI	001 1/8 Stainless Steel Compression	01 1/8 Stainless Steel Compression	B Regulator Tee Purge FKM	
			10 Plugged Port	10 Plugged Port	002 1/4 Stainless Steel Compression	02 1/4 Stainless Steel Compression	C Regulator Tee Purge EPDM	
						003 6mm Stainless Steel Compression	03 6mm Stainless Steel Compression	K Certificate of Conformity
						004 1/4 NPT Male	04 1/4 NPT Male	P Calibration / Pressure Test Certificate
						008 G3/8 BSP L/H Brass Male	08 G3/8 BSP L/H Brass Male	X Special Instruction
						012 BS341 No.4	10 Isolation Valve, 1/4 NPT Female, EPDM Seal	
						027 DIN447 No.3	12 Isolation Valve, 1/8 Stainless Steel Compression, EPDM Seal	
						028 DIN447 No.3.1	14 Isolation Valve, 1/4 Stainless Steel Compression, EPDM Seal	
						050 CGA510	16 Isolation Valve, 6mm Stainless Steel Compression, EPDM Seal	
					For our complete range of cylinder connections refer to 'Cylinder Connection Data'			