

GASARC™

AN ESAB® BRAND



TECH MASTER GPS400 SERIES

4.5 Purity Single Stage Brass Barstock Diaphragm Cylinder Regulator

Tech Master GPS400 series single stage diaphragm cylinder regulators are designed for primary pressure gas control of non-corrosive or toxic, technical gases up to grade 4.5 purity (99.995%), on applications where slight variation from decreasing cylinder pressure is acceptable.

- **GPS400 Series** | Single Stage Diaphragm Cylinder Regulator

★ FEATURES

- Five port configuration
- Rear panel mounting capabilities
- Encapsulated seat design
- Low wetted surface area
- Full range of inlet and outlet fittings
- Base and side entry

📄 MATERIALS

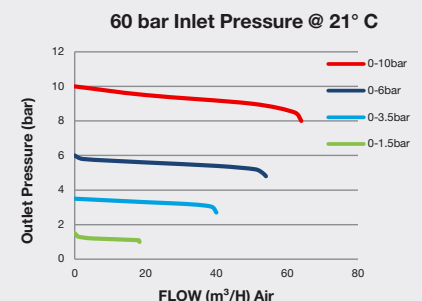
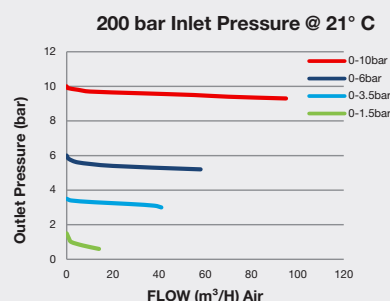
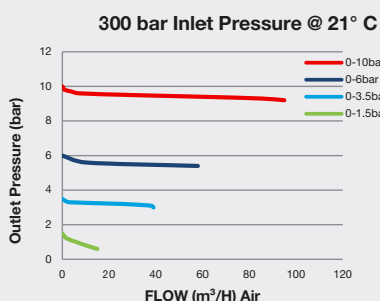
| | |
|-----------|----------------------------------|
| Body | Brass Barstock |
| Bonnet | High Strength Alloy |
| Diaphragm | Polychloroprene (Neoprene®) (CR) |
| Seat | Polyamide (Nylon®) |
| Filter | 10 Micron 316L Stainless Steel |

* Subject to cylinder connection ** Cylinder connection not included

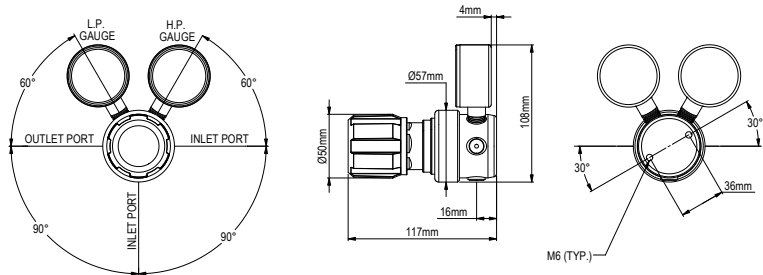
👍 SPECIFICATION

| | |
|-------------------------|---|
| Maximum Inlet Pressure | 60 bar (870 PSI) / 300 bar (4350 PSI)* |
| Delivery Pressure Range | 1.5 bar (22 PSI) / 3.5 bar (50 PSI) / 6 bar (90 PSI) / 10 bar (150 PSI) |
| Gauges | 50mm (2") Diameter |
| Ports | 1/4" NPT Female |
| Temperature Range | -20° C to +60° C (-4° F to +140° F) |
| Flow Coefficient (Cv) | 0.1 |
| Weight | 1.2 kg (2.7 lb)** |
| | EN ISO 2503 Compliant |

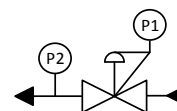
✓ FLOW PERFORMANCE



DIMENSIONS



PROCESS & INSTRUMENTATION



- Adjustable Pressure Regulator with P1 Pressure Gauge



- P2 Pressure Gauge

Model No. Selector Guide

| Product Type | Inlet Pressure | Outlet Pressure | Inlet Pressure Gauge | Outlet Pressure Gauge | Inlet/Cylinder Connection | Outlet Connection | Options |
|--------------|---------------------------|---------------------------|----------------------|-----------------------|---|--|--|
| GPS400 | 02 60 bar / 870 PSI | 02 -1 - 1.5 bar / 22 PSIG | 00 No Gauge Fitted | 00 No Gauge Fitted | 000 No Inlet Fitted | 00 No Outlet | A No Options Selected |
| | 04 300 bar / 4350 PSI | 03 -1 - 3.5 bar / 50 PSIG | 01 bar/PSI | 01 bar/PSI | 001 1/8 Stainless Steel Compression | 01 1/8 Stainless Steel Compression | K Certificate of Conformity |
| | | 04 -1 - 6 bar / 90 PSIG | 10 Plugged Port | 10 Plugged Port | 002 1/4 Stainless Steel Compression | 02 1/4 Stainless Steel Compression | P Calibration/ Pressure Test Certificate |
| | 05 -1 - 10 bar / 150 PSIG | | | | 003 6mm Stainless Steel Compression | 03 6mm Stainless Steel Compression | X Special Instruction |
| | | | | | 004 1/4 NPT Male | 04 1/4 NPT Male | |
| | | | | | 007 G3/8 BSP R/H Brass Male | 05 1/4 SAE Flare Brass Male | |
| | | | | | 008 1/4 NPT Male | 06 G1/2 BSP R/H Brass Male | |
| | | | | | 009 BS341 No.3 (Base Entry) | 07 G3/8 BSP R/H Brass Male | |
| | | | | | 010 BS341 No.3 | 08 G3/8 BSP L/H Brass Male | |
| | | | | | 011 BS341 No.4 (Base Entry) | 09 Isolation Valve, 1/4 NPT Female, FKM Seal | |
| | | | | | 012 BS341 No.4 | 10 Isolation Valve, 1/4 NPT Female, EPDM Seal | |
| | | | | | 015 BS341 No.8 | 11 Isolation Valve, 1/8 Stainless Steel Compression, FKM Seal | |
| | | | | | 030 DIN447 No.6 | 12 Isolation Valve, 1/8 Stainless Steel Compression, EPDM Seal | |
| | | | | | 033 DIN447 No.9 | 13 Isolation Valve, 1/4 Stainless Steel Compression, FKM Seal | |
| | | | | | 034 DIN447 No.10 | 14 Isolation Valve, 1/4 Stainless Steel Compression, EPDM Seal | |
| | | | | | 045 CGA320 | 15 Isolation Valve, 6mm Stainless Steel Compression, FKM Seal | |
| | | | | | 052 CGA540 | 16 Isolation Valve, 6mm Stainless Steel Compression, EPDM Seal | |
| | | | | | 053 CGA580 | 17 Isolation Valve, 1/4 NPT Male, FKM Seal | |
| | | | | | For our complete range of cylinder connections refer to 'Cylinder Connections Data' | 18 Isolation Valve, 1/4 NPT Male, EPDM Seal | |
| | | | | | | 19 Isolation Valve, G3/8 BSP R/H Brass Male, FKM Seal | |
| | | | | | | 20 Isolation Valve, G3/8 BSP R/H Brass Male, EPDM Seal | |
| | | | | | | 21 Isolation Valve, G3/8 BSP L/H Brass Male, FKM Seal | |
| | | | | | 22 Isolation Valve, G3/8 BSP L/H Brass Male, EPDM Seal | | |