

GASARC™

AN ESAB® BRAND

CHEM MASTER SGT620 SERIES

6.0 Purity Two Stage Stainless Steel Piston Cylinder Regulator

Chem Master SGT620 series two stage piston cylinder regulators are designed for primary pressure gas control of corrosive, toxic or high purity gases up to grade 6.0 purity (99.9999%), on applications where constant delivery pressure is required as the cylinder pressure decreases.

- **SGT621 Series** | Two Stage Piston Cylinder Regulator, FKM Seal
- **SGT622 Series** | Two Stage Piston Cylinder Regulator, EPDM Seal



★ FEATURES

- Five port configuration
- Front panel mounting capabilities
- Encapsulated seat design
- Low wetted surface area
- Full range of inlet and outlet fittings
- Side entry

📄 MATERIALS

| | |
|--------|--------------------------------|
| Body | 316L Stainless Steel |
| Bonnet | Nickel Plated Brass Barstock |
| Piston | 316L Stainless Steel |
| Seal | FKM / EPDM |
| Seat | PCTFE |
| Filter | 10 Micron 316L Stainless Steel |

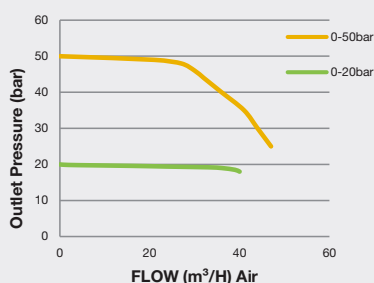
👍 SPECIFICATION

| | |
|-------------------------|--|
| Maximum Inlet Pressure | 60 bar (870 PSI) / 300 bar (4350 PSI)* |
| Delivery Pressure Range | 20 bar (300 PSI) / 50 bar (725 PSI) |
| Gauges | 50mm (2") Diameter |
| Ports | 1/4" NPT Female |
| Temperature Range | -20° C to +60° C (-4° F to +140° F) |
| Flow Coefficient (Cv) | 0.079 |
| Helium leak Integrity | 1 x 10 ⁻⁹ mbar l/s |
| Weight | 2.0 kg (4.4 lb)** |

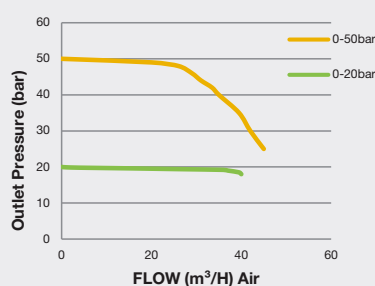
* Subject to cylinder connection ** Cylinder connection not included *** NACE and 3.1 material certificates available on request, please contact the sales office for further information

✓ FLOW PERFORMANCE

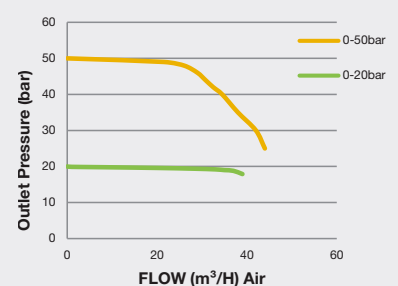
300 bar Inlet Pressure @ 21° C



200 bar Inlet Pressure @ 21° C

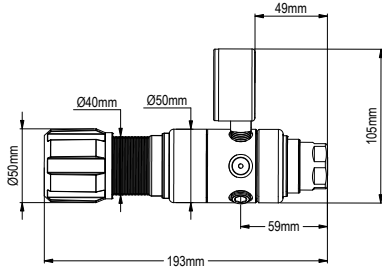
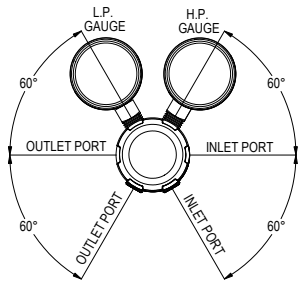


100 bar Inlet Pressure @ 21° C

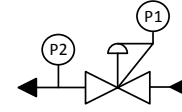




DIMENSIONS



PROCESS & INSTRUMENTATION



- Adjustable Pressure Regulator with P1 Pressure Gauge



- P2 Pressure Gauge

Model No. Selector Guide

| Product Type | Inlet Pressure | Outlet Pressure | Inlet Pressure Gauge | Outlet Pressure Gauge | Inlet/Cylinder Connection | Outlet Connection | Options |
|---------------|------------------------------|----------------------------------|---|---|--|---|--|
| SGT621 | 02 60 bar / 870 PSI | 07 -1 - 20 bar / 300 PSIG | 00 No Gauge Fitted | 00 No Gauge Fitted | 000 No Outlet Fitted | 00 No Outlet Fitted | A No Options Selected |
| SGT622 | 04 300 bar / 4350 PSI | 10 -1 - 50 bar / 725 PSIG | 01 bar / PSI | 01 bar/PSI | 001 1/8 Stainless Steel Compression | 01 1/8 Stainless Steel Compression | B Regular Tee Purge FKM |
| | | | 03 bar / PSI Inc. 3.1 Cert (stainless steel only)*** | 02 bar / PSI Inc. 3.1 Cert (stainless steel only)*** | 002 1/4 Stainless Steel Compression | 02 1/4 Stainless Steel Compression | C Regular Tee Purge EPDM |
| | | | 10 Plugged Port | 10 Plugged Port | 003 6mm Stainless Steel Compression | 03 6mm Stainless Steel Compression | D Regular Tee Deep Purge FKM |
| | | | | | 004 1/4 NPT Male | 04 1/4 NPT Male | E Regular Tee Deep Purge EPDM |
| | | | | | 010 BS341 No.3 | 09 Isolation Valve, 1/4 NPT Female, FKM Seal | F Bonnet Vent Capture Kit |
| | | | | | 012 BS341 No.4 | 10 Isolation Valve, 1/4 NPT Female, EPDM Seal | G Helium Test Certificate |
| | | | | | 019 BS341 No.14 | 11 Isolation Valve, 1/8 Stainless Steel Compression, FKM Seal | H 3.1 Material Certificate*** |
| | | | | | 030 DIN447 No.6 | 12 Isolation Valve, 1/8 Stainless Steel Compression, EPDM Seal | J NACE Certificate*** |
| | | | | | 033 DIN447 No.9 | 13 Isolation Valve, 1/4 Stainless Steel Compression, FKM Seal | K Certificate of Conformity |
| | | | | | 034 DIN447 No.10 | 14 Isolation Valve, 1/4 Stainless Steel Compression, EPDM Seal | L Panel Mount Locking Nut Kit |
| | | | | | 045 CGA320 | 15 Isolation Valve, 6mm Stainless Steel Compression, FKM Seal | P Calibration / Pressure Test Certificate |
| | | | | | 052 CGA540 | 16 Isolation Valve, 6mm Stainless Steel Compression, EPDM Seal | X Special Instruction |
| | | | | | 053 CGA580 | 17 Isolation Valve, 1/4 NPT Male, FKM Seal | |
| | | | | | 18 Isolation Valve, 1/4 NPT Male, EPDM Seal | | |

For our complete range of cylinder connections refer to 'Cylinder connections Data'