

GASARC™

AN ESAB® BRAND



CHEM MASTER SGS600 SERIES

6.0 Purity Single Stage Stainless Steel Diaphragm Cylinder Regulator

Chem Master SGS600 series single stage diaphragm cylinder regulators are designed for primary pressure gas control of corrosive, toxic or high purity gases up to grade 6.0 purity (99.9999%), on applications where slight pressure variation from decreasing cylinder pressure is acceptable.

- **SGS600 Series** | Single Stage Diaphragm Cylinder Regulator, FFKM Pressure Relief Valve

★ FEATURES

- Six port configuration
- Front and rear panel mounting capabilities
- Encapsulated seat design
- Low wetted surface area
- Full range of inlet and outlet fittings
- Side entry

📄 MATERIALS

Body	316L Stainless Steel
Bonnet	Nickel Plated Brass Barstock
Diaphragm	316L Stainless Steel
Seal	PTFE
Seat	PCTFE
Filter	10 Micron 316L Stainless Steel

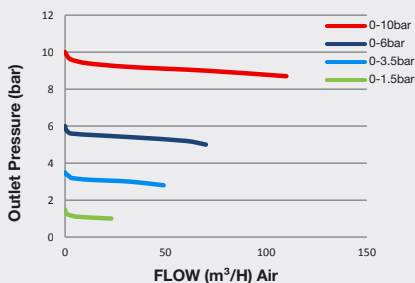
👍 SPECIFICATION

Maximum Inlet Pressure	60 bar (870 PSI) / 300 bar (4350 PSI)*
Delivery Pressure Range	1.5 bar (22 PSI) / 3.5 bar (50 PSI) / 6 bar (90 PSI) / 10 bar (150 PSI)
Gauges	50mm (2") Diameter
Ports	1/4" NPT Female
Temperature Range	-20° C to +60° C (-4° F to +140° F)
Flow Coefficient (Cv)	0.1
Helium leak Integrity	1 x 10 ⁻⁹ mbar l/s
Weight	1.2 kg (2.7 lb)**

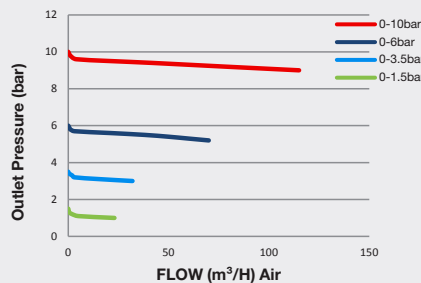
* Subject to cylinder connection ** Cylinder connection not included *** NACE and 3.1 material certificates available on request, please contact the sales office for further information

✓ FLOW PERFORMANCE

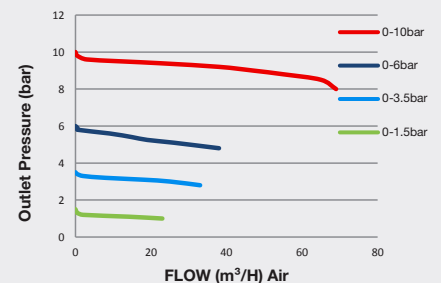
300 bar Inlet Pressure @ 21° C



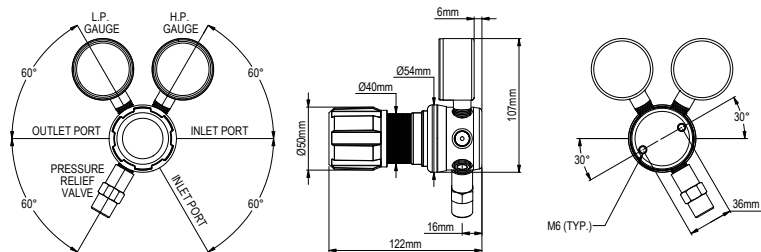
200 bar Inlet Pressure @ 21° C



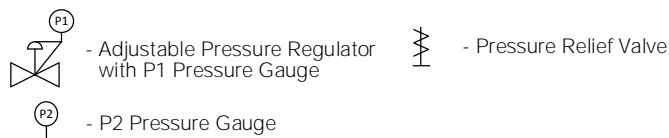
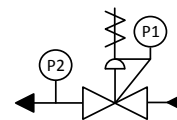
60 bar Inlet Pressure @ 21° C



DIMENSIONS



PROCESS & INSTRUMENTATION



Model No. Selector Guide

Product Type	Inlet Pressure	Outlet Pressure	Inlet Pressure Gauge	Outlet Pressure Gauge	Inlet/Cylinder Connection	Outlet Connection	Options
SGS600	02 60 barr / 870 PSI	02 -1 - 1.5 bar / 22 PSIG	00 No Gauge	00 No Gauge	000 No Inlet	00 No Outlet	A No Options Selected
	04 300 bar / 4350 PSI	03 -1 - 3.5 bar / 50 PSIG	01 bar / PSI	01 bar/PSI	001 1/8 Stainless Steel Compression	01 1/8 Stainless Steel Compression	B Regular Tee Purge FKM
		04 -1 - 6 bar / 90 PSIG	03 bar / PSI Inc. 3.1 Cert (stainless steel only)***	02 bar / PSI Inc. 3.1 Cert (stainless steel only)***	002 1/4 Stainless Steel Compression	02 1/4 Stainless Steel Compression	C Regular Tee Purge EPDM
	05 -1 - 10 bar / 150 PSIG	10 Plugged Port	10 Plugged Port	10 Plugged Port	003 6mm Stainless Steel Compression	03 6mm Stainless Steel Compression	D Regular Tee Deep Purge FKM
					004 1/4 NPT Male	04 1/4 NPT Male	E Regular Tee Deep Purge EPDM
					010 BS341 No.3	09 Isolation Valve, 1/4 NPT Female, FKM Seal	F Bonnet Vent Capture Kit
					012 BS341 No.4	10 Isolation Valve, 1/4 NPT Female, EPDM Seal	G Helium Test Certificate
					019 BS341 No.14	11 Isolation Valve, 1/8 Stainless Steel Compression, FKM Seal	H 3.1 Material Certificate***
					030 DIN447 No.6	12 Isolation Valve, 1/8 Stainless Steel Compression, EPDM Seal	J NACE Certificate***
					033 DIN447 No.9	13 Isolation Valve, 1/4 Stainless Steel Compression, FKM Seal	K Certificate of Conformity
					034 DIN447 No.10	14 Isolation Valve, 1/4 Stainless Steel Compression, EPDM Seal	L Panel Mount Locking Nut Kit
					045 CGA320	15 Isolation Valve, 6mm Stainless Steel Compression, FKM Seal	P Calibration / Pressure Test Certificate
					052 CGA540	16 Isolation Valve, 6mm Stainless Steel Compression, EPDM Seal	X Special Instruction
					053 CGA580	17 Isolation Valve, 1/4 NPT Male, FKM Seal	
						18 Isolation Valve, 1/4 NPT Male, EPDM Seal	

For our complete range of cylinder connections refer to 'Cylinder Connection Data'