

GASARC™

AN ESAB® BRAND



CHEM MASTER SGL620 SERIES

6.0 Purity Single Stage Stainless Steel High Pressure Piston Line Regulator

The Chem Master SGL620 series single stage piston line regulators are designed for secondary pressure gas control of corrosive, toxic, and high purity gases up to grade 6.0 purity (99.9999%), on gas distribution systems.

- **SGL621 Series** | Single Stage Piston Line Regulator, FKM Seal
- **SGL622 Series** | Single Stage Piston Line Regulator, EDPM Seal

★ FEATURES

- Four port configuration
- Front and rear panel mounting capabilities
- Encapsulated seat design
- Low wetted surface area
- Full range of inlet and outlet fittings
- Side entry

📄 MATERIALS

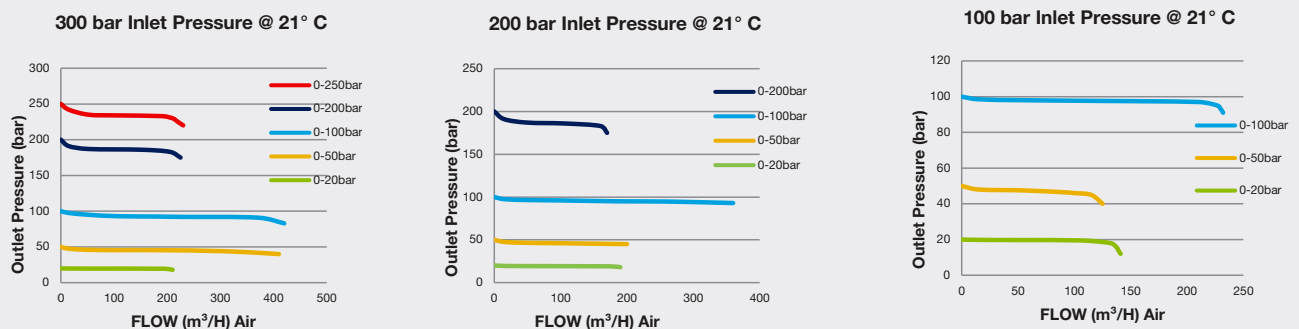
Body	316L Stainless Steel
Bonnet	Nickel Plated Brass Barstock
Piston	316L Stainless Steel
Seal	FKM / EPDM
Seat	PCTFE
Filter	10 Micron 316L Stainless Steel

*** NACE and 3.1 material certificates available on request, please contact the sales office for further information

👍 SPECIFICATION

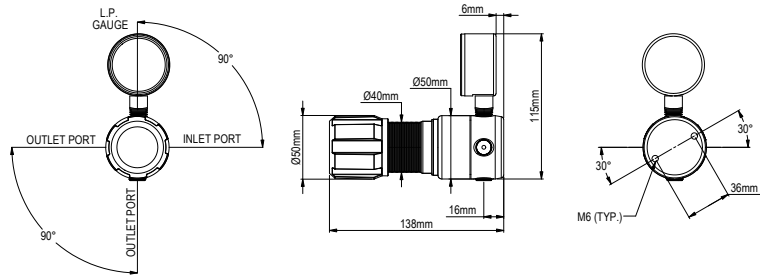
Maximum Inlet Pressure	300 bar (4350 PSI)
Delivery Pressure Range	20 bar (300 PSI) / 50 bar (725 PSI) / 100 bar (1450 PSI) / 200 bar (2900 PSI) / 250 bar (3630 PSI)
Gauges	50mm (2") Diameter
Ports	1/4" NPT Female
Temperature Range	-20° C to +60° C (-4° F to +140° F)
Flow Coefficient (Cv)	0.1
Helium leak Integrity	1 x 10 ⁻⁹ mbar l/s
Weight	1.4 kg (3.1 lb)

✓ FLOW PERFORMANCE

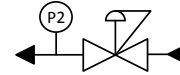




DIMENSIONS



PROCESS & INSTRUMENTATION



- Adjustable Pressure Regulator



- P2 Pressure Gauge

Model No. Selector Guide

Product Type	Inlet Pressure	Outlet Pressure	Inlet Pressure Gauge	Outlet Pressure Gauge	Inlet/Cylinder Connection	Outlet Connection	Options
SGL621	04 300 bar / 4350 PSI	07 -1 - 20 bar / 300 PSI	00 No Gauge Fitted	00 No Gauge Fitted	000 No Inlet Fitted	00 No Outlet Fitted	A No Options Selected
SGL622		10 -1 - 50 bar / 725 PSI		01 bar/PSI	001 1/8 Stainless Steel Compression	01 1/8 Stainless Steel Compression	F Bonnet Vent Capture Kit
		11 0 - 100 bar / 1450 PSI		02 bar/PSI 3.1 Cert (stainless steel only)***	002 1/4 Stainless Steel Compression	02 1/4 Stainless Steel Compression	G Helium Test Certificate
		12 0 - 200 bar / 2900 PSI		10 Plugged Port	003 6mm Stainless Steel Compression	03 6mm Stainless Steel Compression	H 3.1 Material Certificate***
		13 0 - 250 bar / 3630 PSI			004 1/4 NPT Male	04 1/4 NPT Male	J NACE Certificate***
						09 Isolation Valve, 1/4 NPT Female, FKM Seal	K Certificate of Conformity
						10 Isolation Valve, 1/4 NPT Female, EPDM Seal	L Panel Mount Locking Nut Kit
						11 Isolation Valve, 1/8 Stainless Steel Compression, FKM Seal	P Calibration / Pressure Test Certificate
						12 Isolation Valve, 1/8 Stainless Steel Compression, EPDM Seal	X Special Instruction
						13 Isolation Valve, 1/4 Stainless Steel Compression, FKM Seal	
						14 Isolation Valve, 1/4 Stainless Steel Compression, EPDM Seal	
						15 Isolation Valve, 6mm Stainless Steel Compression, FKM Seal	
						16 Isolation Valve, 6mm Stainless Steel Compression, EPDM Seal	
						17 Isolation Valve, 1/4 NPT Male, FKM Seal	
						18 Isolation Valve, 1/4 NPT Male, EPDM seal	